



GMT MONTHLY MEMBERSHIP PROGRESS REPORT

Results as of: 9/30/2019

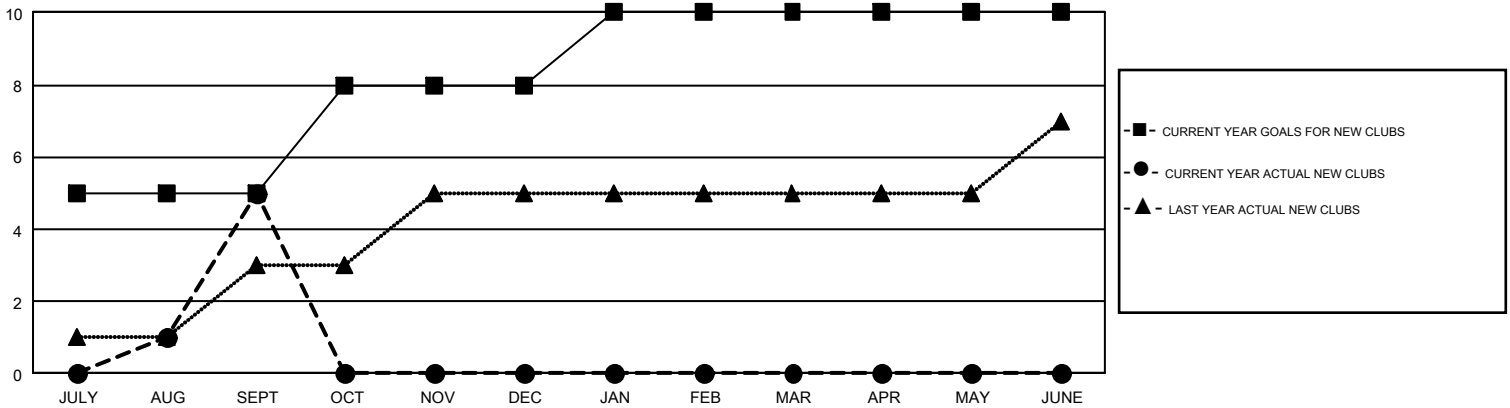
GMT Constitutional Area 5 - E, Group P

GMT: OPEN

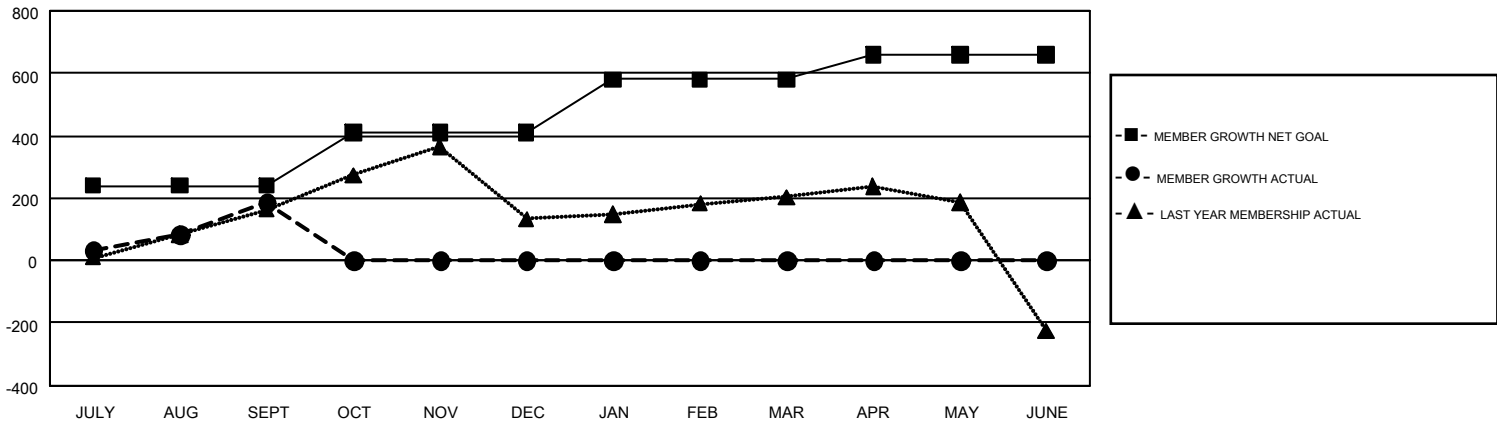
REPORT DOES NOT INCLUDE CLUBS IN UNDISTRICTED AREAS.

Clubs				Members			
RESULTS FOR 2019-2020				RESULTS FOR 2019-2020			
QUARTER	NEW CLUB GOAL	NEW CLUBS	DROPPED CLUBS	QUARTER	MEMBER GROWTH NET GOAL	MEMBER GROWTH ACTUAL	DROPPED MEMBERS ACTUAL (including transfers)
JULY/AUG/SEPT	5	5	0	JULY/AUG/SEPT	240	359	140
OCT/NOV/DEC	3	0	0	OCT/NOV/DEC	170	0	0
JAN/FEB/MAR	2	0	0	JAN/FEB/MAR	170	0	0
APR/MAY/JUNE	0	0	0	APR/MAY/JUNE	80	0	0

GOALS AND ACTUAL NEW CLUBS CUMULATIVE



GOALS AND ACTUAL MEMBERS CUMULATIVE



DROPPED CLUBS: 0	62 CLUBS OF 295 ADDED 1 OR MORE NEW MEMBERS	GENDER DISTRIBUTION MALE 4,183 (52.34%) FEMALE 3,809 (47.66%)
DROPPED MEMBERS DECEASED 5 CLUB CANCELLED 0 OTHER 135 <hr/> TOTAL 140	CLICK HERE FOR CUMULATIVE MEMBERSHIP DATA	TOTAL FAMILY UNIT MEMBERS 433 FAMILY MEMBERS PAYING HALF DUES 231